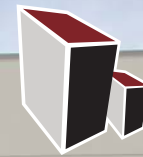


Heritage Crossing #1

14407 S. Gougar Road, Lockport, IL



ML REALTY
PARTNERS

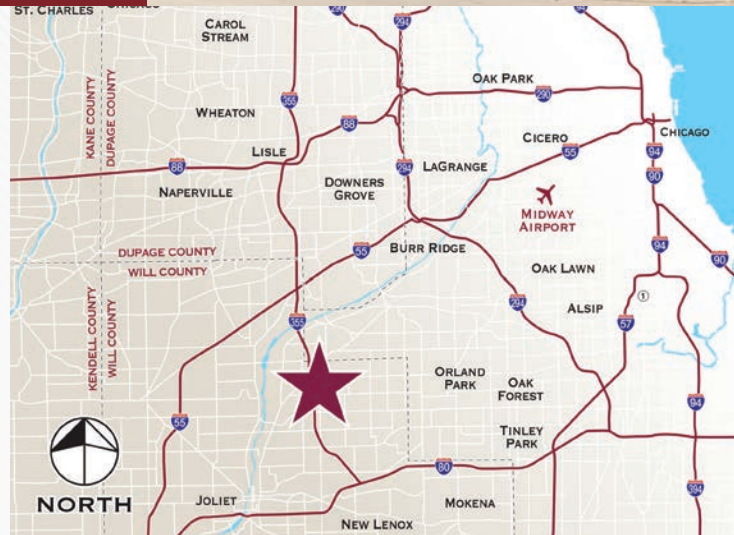
± 61,163 SF AVAILABLE

Building Specifications

Building Size:	± 121,800 SF
Available:	± 61,163 SF
Office:	2,564 SF
Clear Height:	30' Clear
Loading:	14 Exterior Truck Docks
Drive In Doors:	3
Electric:	400 Amps, 480 Volts
Lighting:	T5
Car Parking:	94 Spaces (Expandable to 116)
Trailer Parking:	22 Trailer Stalls
Column Spacing:	42' x 50', with a 60' Speed Bay
Sprinkler System:	ESFR

Building Features

- › I-355 & 143rd Street full interchange
- › Easy access to/from major interstates
- › Concrete truck courts



For More Information Contact

NAIHiffman

DAN LEAHY, SIOR

630-691-0604

dleahy@hiffman.com

JOHN WHITEHEAD

630-693-0643

jwhitehead@hiffman.com

MARK MORAN

630-693-0656

mmoran@hiffman.com

Owner:

ML Realty Partners \ \ One Pierce Place, Suite 450, Itasca, Illinois 60143 \ \ 630-250-2900

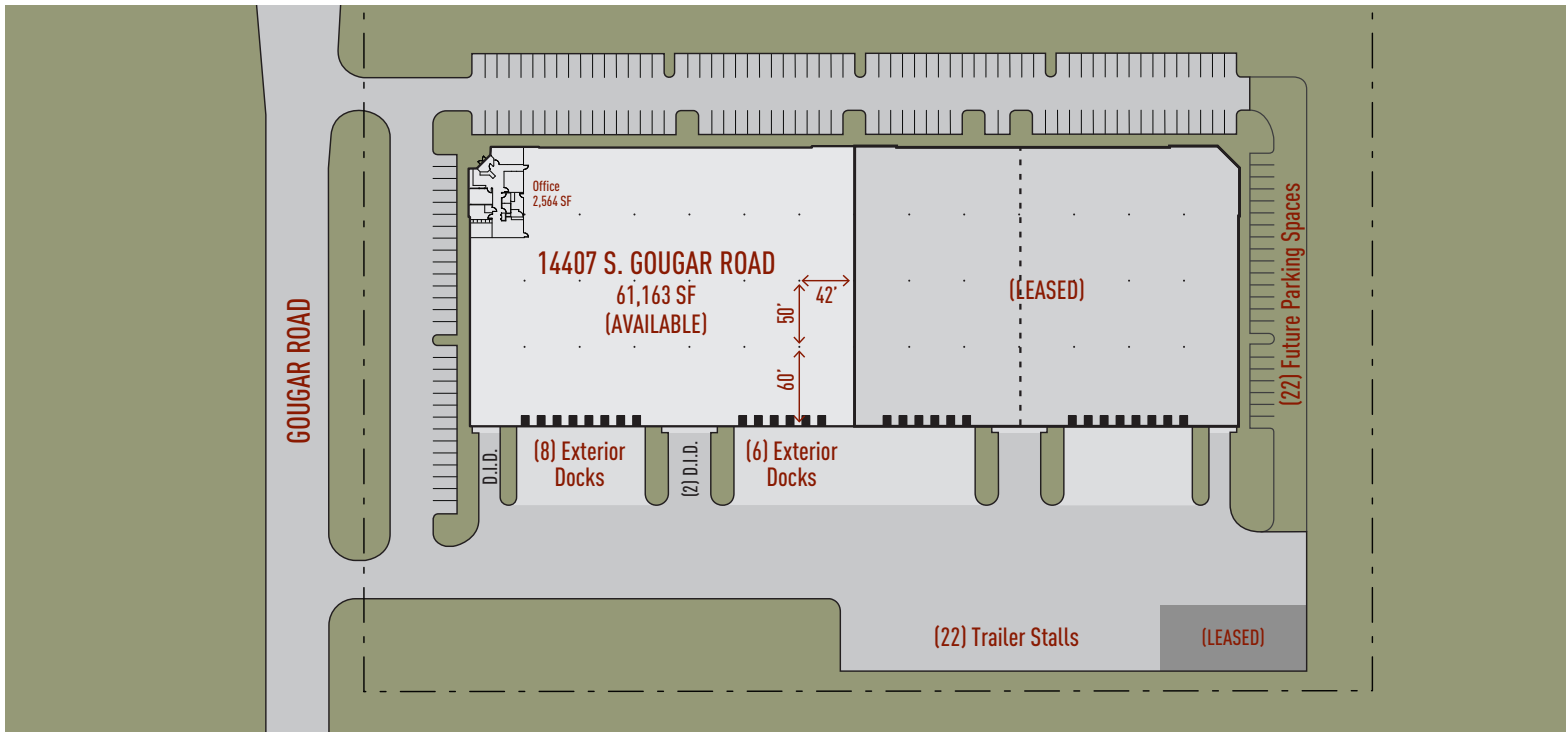
Information contained herein is subject to change and verification, and no liability for errors or omissions is assumed. © 2017 All Rights Reserved. ML Realty Partners

Heritage Crossing #1

14407 S. Gougar Road, Lockport, IL



Master Plan Rendering



NORTH ↑



ML REALTY
PARTNERS

ML Realty Partners \ \ One Pierce Place, Suite 450, Itasca, Illinois 60143 \ \ 630-250-2900

Information contained herein is subject to change and verification, and no liability for errors or omissions is assumed. © 2017 All Rights Reserved. ML Realty Partners