

4395 Diplomacy Road, Fort Worth, TX



ML REALTY
PARTNERS



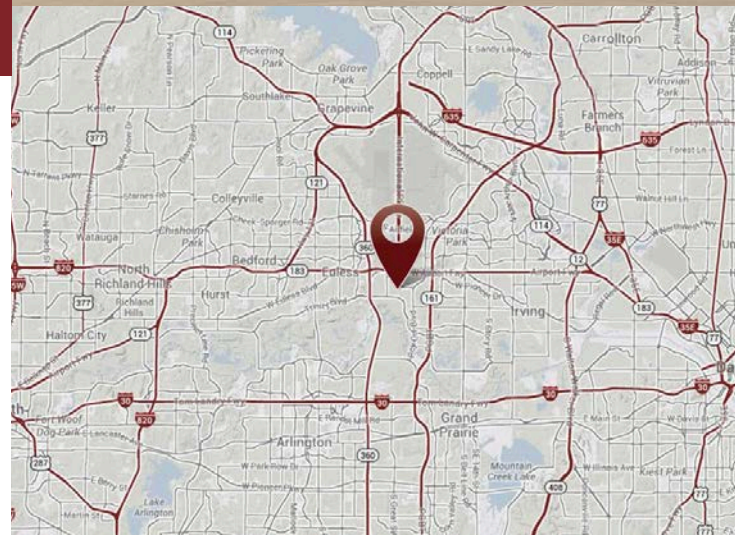
65,814 SF AVAILABLE

Building Specifications

Building Size:	65,814 SF
Total Available:	65,814 SF
Office:	9,845 SF (Includes 4,698 SF Mezzanine)
A/C Production Room:	10,932 SF
Clear Height:	24' Clear
Loading:	5 Dock High Doors With Levelers, Seals, Locks & Lights
Drive In Doors:	1 Ramped
Electric:	1800 Amps, 480 Volts, 3-Phase
Car Parking:	69 Spaces
Column Spacing:	40' x 42'
Sprinkler System:	Yes
HVAC:	100%

Building Features

- › Strategically located at the south entrance of DFW International Airport in CentrePort Business Park
- › Free-standing, corporate image building
- › Easy access to major thoroughfares
- › Gated truck court and parking



For More Information Contact



COMMERCIAL REAL ESTATE SERVICES

MARK GRAYBILL

972-934-4007

mgraybill@lee-associates.com

ADAM GRAHAM

972-934-4011

agraham@lee-associates.com

Owner:

ML Realty Partners \ \ 8150 N Central Expy, Suite M-2140, Dallas, TX 75206 \ \ 214-389-1155

Information contained herein is subject to change and verification, and no liability for errors or omissions is assumed. © 2017 All Rights Reserved. ML Realty Partners

4395 Diplomacy Road, Fort Worth, TX

DFW INTERNATIONAL AIRPORT

AIRPORT FREEWAY

F.A.A. BOULEVARD

VALLEY VIEW LANE

360

161

TRINITY BOULEVARD

EMPIRE ROAD

Master Plan Rendering

