

14801 Sovereign Road, Fort Worth, TX, SUITE 4550



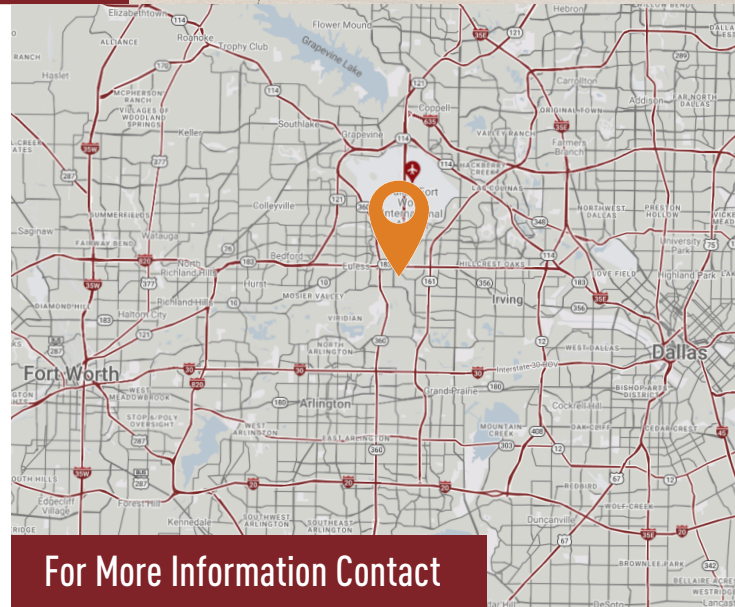
ML REALTY  
PARTNERS



**36,020 SF AVAILABLE**

## Building Specifications

Building Size: 212,088 SF  
Total Available: 36,020 SF  
1st Floor Office: 5,430 SF  
2nd Floor Office: 3,900 SF  
Clear Height: 25' Clear  
Loading: 6 Dock High Doors  
Electric: 1200 Amps, 277/480 Volts, 3-Phase  
Column Spacing: 40' x 50' Typical  
Sprinkler System: ESFR



For More Information Contact

## Building Features

- › Located in CentrePort Business Park, providing first-class image and environment
- › Easy access to SH 183, SH 360, SH 161/PGBT, I-20, and I-30
- › Triple Freeport tax exemption

**NAI Robert Lynn**

**ADAM BROWN**  
214-256-7100  
abrown@nairl.com

Owner:  
ML Realty Partners \ 5495 Belt Line Rd, Suite 330, Dallas, TX 75254 \ 214-389-1155

Information contained herein is subject to change and verification, and no liability for errors or omissions is assumed. © 2024 All Rights Reserved. ML Realty Partners



14801 Sovereign Road, Fort Worth, TX  
SUITE 4550

DFW INTERNATIONAL AIRPORT

AIRPORT FREEWAY

360

TRINITY BOULEVARD

FAA BOULEVARD

EMPIRE ROAD

VALLEY VIEW LANE

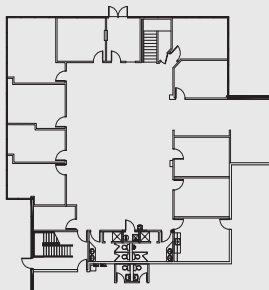
161

## Master Plan Rendering

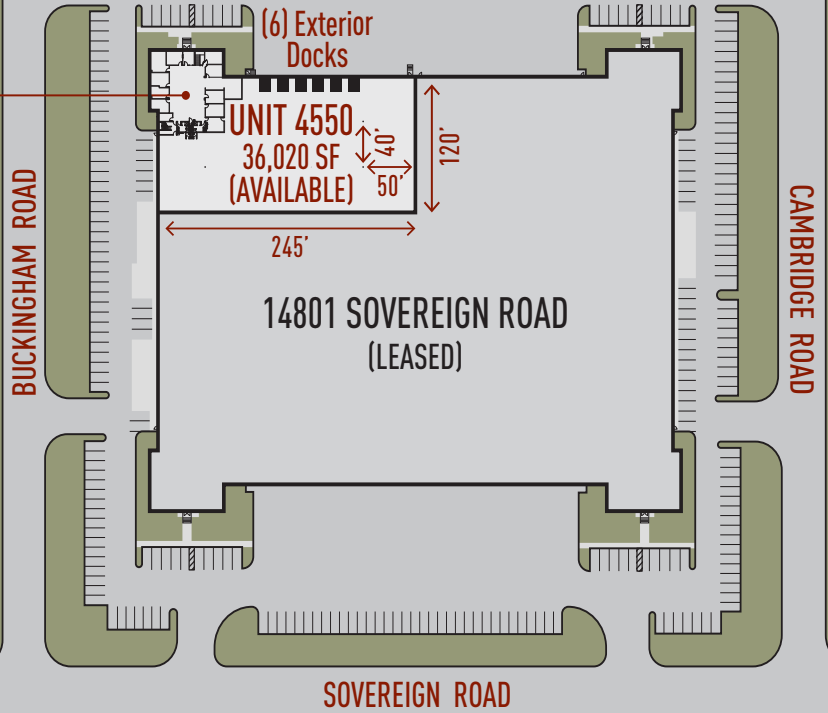
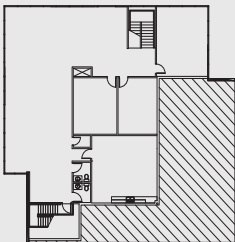


ML REALTY  
PARTNERS

First Floor Office - 5,430 SF

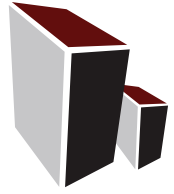


Second Floor Office - 3,900 SF



NORTH ↑

14801 Sovereign Road, Fort Worth, TX



ML REALTY  
PARTNERS

# SUITE 4550 FLOOR PLAN

