

320 County Line Road, Bensenville, IL

DuPage County Taxes

20,746 SF AVAILABLE



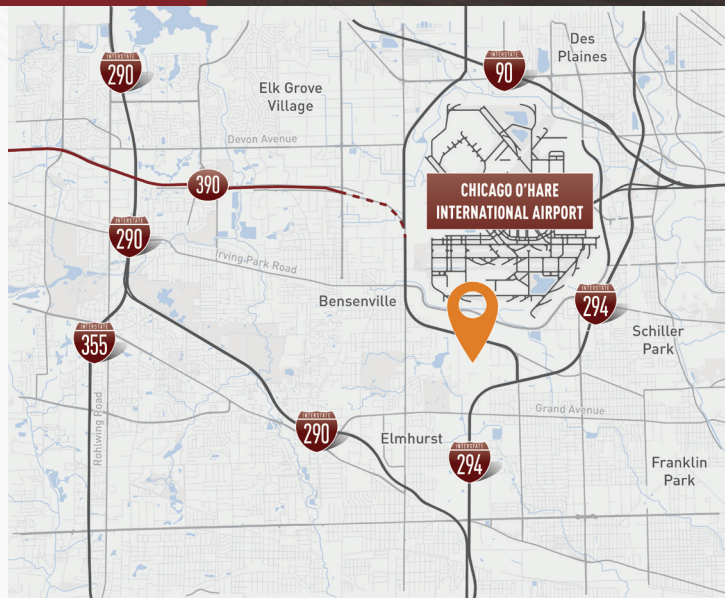
ML REALTY
PARTNERS

Building Specifications

Building Size: 66,939 SF
Available: 20,746 SF
Office: 2,321 SF
Clear Height: 21' Clear
Loading: 1 Drive In Door
Dock #2 - Shared (See Site Plan)
Dock #3 - Exclusive (See Site Plan)
Power: 200 Amps, 120/208 Volts, 3-Phase
Sprinkler: ESFR

Building Features

- › Located in O'Hare submarket with **DuPage County taxes**
- › Close proximity to O'Hare south cargo entrance



For More Information Contact

ADAM STOKES
312-498-7400
astokes@hiffman.com

TERRY HERLIHY
630-693-0664
therlihy@hiffman.com

HARRISON TAYLOR
630-389-8931
htaylor@hiffman.com



Owner:
ML Realty Partners \ \ One Pierce Place, Suite 450, Itasca, Illinois 60143 \ \ 630-250-2900
Information contained herein is subject to change and verification, and no liability for errors or omissions is assumed. © 2025 All Rights Reserved. ML Realty Partners

320 County Line Road, Bensenville, IL

CHICAGO O'HARE INTERNATIONAL AIRPORT



Site Plan

